

**CERTIFICATE OF ANALYSIS FOR**

**CERTIFIED REFERENCE MATERIAL**

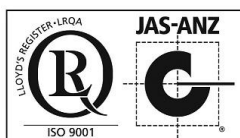
**OREAS 927b**

**Copper Ore**

**(CSA Mine, north-west Cobar, central western New South  
Wales, Australia)**



Accredited for compliance with ISO 17034



COA-1879-OREAS927b-R0 BUP-70-10-01 Ver:2.0	18-Dec-2024
---	-------------

**Table 1. Certified Values, Uncertainty & Tolerance Intervals for multi-elements by 4-acid digestion and aqua regia digestion in OREAS 927b.**

Constituent	Certified Value <sup>†</sup>	95 % Expanded Uncertainty		95 % Tolerance Limits	
		Low	High	Low	High
<b>4-Acid Digestion</b>					
Ag, Silver (ppm)	4.63	4.45	4.80	4.51	4.75
Al, Aluminium (wt.%)	6.09	5.92	6.26	5.99	6.19
As, Arsenic (ppm)	56	54	59	54	58
Be, Beryllium (ppm)	2.21	2.11	2.31	2.13	2.29
Bi, Bismuth (ppm)	63	61	66	62	65
Ca, Calcium (wt.%)	0.029	0.027	0.030	0.028	0.029
Cd, Cadmium (ppm)	0.20	0.18	0.22	0.17	0.22
Ce, Cerium (ppm)	73	69	77	71	74
Co, Cobalt (ppm)	9.70	9.28	10.11	9.32	10.07
Cr, Chromium (ppm)	77	72	82	75	80
Cs, Caesium (ppm)	4.59	4.35	4.84	4.46	4.72
Cu, Copper (wt.%)	1.15	1.13	1.17	1.13	1.16
Dy, Dysprosium (ppm)	3.05	2.75	3.34	2.88	3.21
Er, Erbium (ppm)	1.57	1.46	1.69	1.54	1.61
Eu, Europium (ppm)	1.14	1.02	1.26	1.08	1.20
Fe, Iron (wt.%)	4.27	4.17	4.37	4.18	4.36
Ga, Gallium (ppm)	18.5	17.6	19.3	17.7	19.3
Gd, Gadolinium (ppm)	4.58	4.43	4.72	4.45	4.71
Ge, Germanium (ppm)	0.16	0.13	0.20	0.16	0.17
Hf, Hafnium (ppm)	2.30	2.17	2.42	2.19	2.40
Ho, Holmium (ppm)	0.54	0.48	0.61	0.53	0.56
In, Indium (ppm)	0.98	0.94	1.03	0.95	1.02
K, Potassium (wt.%)	2.48	2.42	2.54	2.43	2.53
La, Lanthanum (ppm)	39.9	37.9	41.9	38.7	41.1
Li, Lithium (ppm)	22.3	21.5	23.1	21.8	22.8
Lu, Lutetium (ppm)	0.25	0.22	0.28	0.23	0.28
Mg, Magnesium (wt.%)	0.326	0.315	0.336	0.316	0.335
Mn, Manganese (wt.%)	0.008	0.008	0.008	0.008	0.008
Mo, Molybdenum (ppm)	5.27	5.06	5.49	5.08	5.46
Na, Sodium (wt.%)	0.079	0.072	0.085	0.076	0.081
Nb, Niobium (ppm)	4.45	3.80	5.09	4.20	4.69
Nd, Neodymium (ppm)	33.5	31.8	35.2	32.3	34.7
Ni, Nickel (ppm)	10.9	10.1	11.7	10.1	11.6
P, Phosphorus (wt.%)	0.031	0.030	0.032	0.030	0.032
Pb, Lead (ppm)	61	59	64	60	63
Pr, Praseodymium (ppm)	8.90	8.15	9.65	8.60	9.19

SI unit equivalents: ppm (parts per million;  $1 \times 10^{-6}$ )  $\equiv$  mg/kg; wt.% (weight per cent)  $\equiv$  % (mass fraction).

<sup>†</sup>The operationally defined measurand meets the requirements of ISO 17034 [9] and all participating laboratories comply with the requirements of ISO 17025 [8].

Note: intervals may appear asymmetric due to rounding.

Table 1 continued.

Constituent	Certified Value <sup>†</sup>	95 % Expanded Uncertainty		95 % Tolerance Limits	
		Low	High	Low	High
<b>4-Acid Digestion continued</b>					
Rb, Rubidium (ppm)	145	140	150	141	149
Re, Rhenium (ppm)	< 0.002	IND	IND	IND	IND
S, Sulphur (wt.%)	1.30	1.26	1.33	1.27	1.33
Sb, Antimony (ppm)	3.74	3.49	3.98	3.52	3.95
Sc, Scandium (ppm)	11.1	10.5	11.7	10.8	11.5
Se, Selenium (ppm)	15.3	14.3	16.3	14.9	15.7
Sm, Samarium (ppm)	6.16	5.75	6.57	5.92	6.39
Sn, Tin (ppm)	13.0	12.5	13.6	12.6	13.5
Sr, Strontium (ppm)	42.1	40.4	43.8	40.9	43.2
Ta, Tantalum (ppm)	0.32	0.27	0.38	0.29	0.35
Tb, Terbium (ppm)	0.58	0.51	0.64	0.54	0.61
Te, Tellurium (ppm)	0.10	0.07	0.13	IND	IND
Th, Thorium (ppm)	12.9	12.4	13.4	12.5	13.3
Ti, Titanium (wt.%)	0.197	0.184	0.209	0.190	0.203
Tl, Thallium (ppm)	0.91	0.87	0.94	0.88	0.94
Tm, Thulium (ppm)	0.20	0.16	0.24	IND	IND
U, Uranium (ppm)	4.20	4.02	4.37	4.05	4.34
V, Vanadium (ppm)	183	176	190	178	188
W, Tungsten (ppm)	6.48	6.02	6.94	6.23	6.73
Y, Yttrium (ppm)	15.2	13.9	16.6	14.7	15.7
Yb, Ytterbium (ppm)	1.55	1.41	1.69	1.47	1.62
Zn, Zinc (ppm)	112	108	116	109	115
Zr, Zirconium (ppm)	77	75	80	75	80
<b>Aqua Regia Digestion</b>					
Ag, Silver (ppm)	4.51	4.32	4.69	4.40	4.62
Al, Aluminium (wt.%)	0.674	0.634	0.714	0.655	0.693
As, Arsenic (ppm)	54	52	56	52	55
Au, Gold (ppm)	< 0.02	IND	IND	IND	IND
B, Boron (ppm)	< 10	IND	IND	IND	IND
Ba, Barium (ppm)	177	155	200	172	183
Be, Beryllium (ppm)	0.44	0.42	0.47	0.42	0.46
Bi, Bismuth (ppm)	63	61	66	62	64
Ca, Calcium (wt.%)	0.024	0.019	0.029	0.024	0.024
Cd, Cadmium (ppm)	0.18	0.16	0.20	0.16	0.20
Ce, Cerium (ppm)	53	50	55	51	54

SI unit equivalents: ppm (parts per million;  $1 \times 10^{-6}$ )  $\equiv$  mg/kg; wt.% (weight per cent)  $\equiv$  % (mass fraction).

Note: intervals may appear asymmetric due to rounding.

<sup>†</sup>The operationally defined measurand meets the requirements of ISO 17034 [9] and all participating laboratories comply with the requirements of ISO 17025 [8].

IND = indeterminate (due to limited reading resolution of the methods employed. For practical purposes the 95% Expanded Uncertainty can be set between zero and a two times multiple of the upper bound/non-detect limit value).

Table 1 continued.

Constituent	Certified Value <sup>†</sup>	95 % Expanded Uncertainty		95 % Tolerance Limits	
		Low	High	Low	High
<b>Aqua Regia Digestion continued</b>					
Co, Cobalt (ppm)	9.55	9.11	9.99	9.29	9.81
Cr, Chromium (ppm)	18.8	17.3	20.2	18.0	19.5
Cs, Caesium (ppm)	1.25	1.14	1.37	1.20	1.31
Cu, Copper (wt.%)	1.14	1.12	1.15	1.12	1.15
Fe, Iron (wt.%)	4.05	3.94	4.16	3.99	4.11
Ga, Gallium (ppm)	2.43	2.18	2.69	2.32	2.55
Ge, Germanium (ppm)	0.13	0.10	0.15	IND	IND
Hf, Hafnium (ppm)	0.29	0.26	0.32	0.27	0.31
Hg, Mercury (ppm)	0.042	0.030	0.053	IND	IND
In, Indium (ppm)	0.93	0.90	0.97	0.91	0.96
K, Potassium (wt.%)	0.267	0.251	0.282	0.258	0.275
La, Lanthanum (ppm)	25.2	23.7	26.6	24.6	25.7
Li, Lithium (ppm)	2.36	2.07	2.65	2.21	2.51
Lu, Lutetium (ppm)	0.083	0.065	0.100	IND	IND
Mg, Magnesium (wt.%)	0.060	0.056	0.064	0.059	0.061
Mn, Manganese (wt.%)	0.006	0.006	0.006	0.006	0.006
Mo, Molybdenum (ppm)	4.97	4.75	5.20	4.84	5.10
Na, Sodium (wt.%)	0.010	0.009	0.012	IND	IND
Nb, Niobium (ppm)	< 0.05	IND	IND	IND	IND
Ni, Nickel (ppm)	8.31	7.52	9.09	7.88	8.74
P, Phosphorus (wt.%)	0.026	0.024	0.028	0.025	0.027
Pb, Lead (ppm)	46.9	44.5	49.3	45.5	48.4
Rb, Rubidium (ppm)	16.0	15.0	17.1	15.4	16.6
Re, Rhenium (ppm)	< 0.001	IND	IND	IND	IND
S, Sulphur (wt.%)	1.30	1.26	1.34	1.28	1.32
Sb, Antimony (ppm)	2.34	2.09	2.60	2.22	2.47
Sc, Scandium (ppm)	1.89	1.73	2.05	1.76	2.02
Se, Selenium (ppm)	14.4	13.6	15.2	13.9	15.0
Sn, Tin (ppm)	10.1	9.7	10.6	9.7	10.5
Sr, Strontium (ppm)	8.75	7.62	9.87	8.44	9.05
Ta, Tantalum (ppm)	< 0.01	IND	IND	IND	IND
Tb, Terbium (ppm)	0.37	0.32	0.43	0.31	0.44
Te, Tellurium (ppm)	0.080	0.065	0.096	IND	IND
Th, Thorium (ppm)	8.61	8.14	9.08	8.30	8.91
Ti, Titanium (wt.%)	0.005	0.004	0.006	0.005	0.005

SI unit equivalents: ppm (parts per million;  $1 \times 10^{-6}$ )  $\equiv$  mg/kg; wt.% (weight per cent)  $\equiv$  % (mass fraction).

Note: intervals may appear asymmetric due to rounding.

<sup>†</sup>The operationally defined measurand meets the requirements of ISO 17034 [9] and all participating laboratories comply with the requirements of ISO 17025 [8].

IND = indeterminate (due to limited reading resolution of the methods employed. For practical purposes the 95% Expanded Uncertainty can be set between zero and a two times multiple of the upper bound/non-detect limit value).

**Table 1 continued.**

Constituent	Certified Value <sup>†</sup>	95 % Expanded Uncertainty		95 % Tolerance Limits	
		Low	High	Low	High
<b>Aqua Regia Digestion continued</b>					
Tl, Thallium (ppm)	0.13	0.12	0.15	0.12	0.15
U, Uranium (ppm)	2.21	2.09	2.34	2.14	2.28
V, Vanadium (ppm)	21.1	19.8	22.4	20.0	22.1
W, Tungsten (ppm)	3.61	3.27	3.96	3.49	3.73
Y, Yttrium (ppm)	6.24	5.90	6.59	6.07	6.41
Yb, Ytterbium (ppm)	0.61	0.53	0.69	IND	IND
Zn, Zinc (ppm)	103	99	106	101	105
Zr, Zirconium (ppm)	10.2	9.6	10.8	9.8	10.6

SI unit equivalents: ppm (parts per million;  $1 \times 10^{-6}$ )  $\equiv$  mg/kg; wt.% (weight per cent)  $\equiv$  % (mass fraction).

Note: intervals may appear asymmetric due to rounding.

<sup>†</sup>The operationally defined measurand meets the requirements of ISO 17034 [9] and all participating laboratories comply with the requirements of ISO 17025 [8].

IND = indeterminate (due to limited reading resolution of the methods employed. For practical purposes the 95% Expanded Uncertainty can be set between zero and a two times multiple of the upper bound/non-detect limit value).

**Table 2. Certified Values, Uncertainty & Tolerance Intervals for other measurands in OREAS 927b.**

Constituent	Certified Value	95 % Expanded Uncertainty		95 % Tolerance Limits	
		Low	High	Low	High
<b>Borate Fusion XRF</b>					
Al <sub>2</sub> O <sub>3</sub> , Aluminium(III) oxide (wt.%)	11.71	11.55	11.87	11.57	11.86
BaO, Barium oxide (wt.%)	0.225	0.212	0.238	0.216	0.233
Bi, Bismuth (ppm)	< 100	IND	IND	IND	IND
CaO, Calcium oxide (wt.%)	0.035	0.024	0.046	IND	IND
Co, Cobalt (ppm)	< 100	IND	IND	IND	IND
Cr <sub>2</sub> O <sub>3</sub> , Chromium(III) oxide (ppm)	131	115	148	IND	IND
Cu, Copper (wt.%)	1.14	1.12	1.16	1.12	1.15
Fe <sub>2</sub> O <sub>3</sub> , Iron(III) oxide (wt.%)	6.20	6.12	6.28	6.15	6.26
Hf, Hafnium (ppm)	< 80	IND	IND	IND	IND
K <sub>2</sub> O, Potassium oxide (wt.%)	3.05	3.01	3.09	3.01	3.09
MgO, Magnesium oxide (wt.%)	0.561	0.533	0.590	0.545	0.578
Mo, Molybdenum (ppm)	< 50	IND	IND	IND	IND
Na <sub>2</sub> O, Sodium oxide (wt.%)	0.113	0.082	0.143	IND	IND
Ni, Nickel (ppm)	< 50	IND	IND	IND	IND
P <sub>2</sub> O <sub>5</sub> , Phosphorus(V) oxide (wt.%)	0.067	0.062	0.072	IND	IND
Rb, Rubidium (ppm)	108	63	152	IND	IND
Sb, Antimony (ppm)	< 50	IND	IND	IND	IND
SiO <sub>2</sub> , Silicon dioxide (wt.%)	71.87	71.05	72.69	71.42	72.32
Sn, Tin (ppm)	< 50	IND	IND	IND	IND
SO <sub>3</sub> , Sulphur trioxide (wt.%)	3.21	2.99	3.43	3.15	3.26

SI unit equivalents: ppm (parts per million;  $1 \times 10^{-6}$ )  $\equiv$  mg/kg; wt.% (weight per cent)  $\equiv$  % (mass fraction).

Note: intervals may appear asymmetric due to rounding.

IND = indeterminate (due to limited reading resolution of the methods employed).

Table 1 continued.

Constituent	Certified Value	95 % Expanded Uncertainty		95 % Tolerance Limits	
		Low	High	Low	High
<b>Borate Fusion XRF continued</b>					
SrO, Strontium oxide (ppm)	< 120	IND	IND	IND	IND
TiO <sub>2</sub> , Titanium dioxide (wt.%)	0.493	0.477	0.508	0.477	0.508
V, Vanadium (ppm)	175	130	220	IND	IND
Zn, Zinc (ppm)	114	88	140	IND	IND
Zr, Zirconium (ppm)	103	92	115	IND	IND
<b>Thermogravimetry</b>					
LOI <sup>1000</sup> , Loss On Ignition @1000 °C (wt.%)	3.89	3.75	4.02	3.80	3.98
<b>Borate / Peroxide Fusion ICP</b>					
Al, Aluminium (wt.%)	6.14	6.04	6.24	6.08	6.19
As, Arsenic (ppm)	59	53	64	56	61
Ba, Barium (wt.%)	0.196	0.190	0.202	0.192	0.200
Be, Beryllium (ppm)	2.43	1.84	3.03	2.20	2.67
Bi, Bismuth (ppm)	64	60	67	62	66
Ca, Calcium (wt.%)	0.046	0.032	0.060	IND	IND
Cd, Cadmium (ppm)	< 10	IND	IND	IND	IND
Ce, Cerium (ppm)	77	74	81	75	80
Co, Cobalt (ppm)	9.95	9.40	10.49	9.50	10.39
Cr <sub>2</sub> O <sub>3</sub> , Chromium(III) oxide (ppm)	127	120	135	125	130
Cs, Caesium (ppm)	4.84	4.58	5.10	4.60	5.09
Cu, Copper (wt.%)	1.14	1.10	1.18	1.11	1.16
Dy, Dysprosium (ppm)	4.55	4.28	4.83	4.28	4.83
Er, Erbium (ppm)	2.66	2.56	2.76	2.52	2.80
Eu, Europium (ppm)	1.23	1.16	1.30	1.18	1.28
Fe, Iron (wt.%)	4.31	4.21	4.40	4.25	4.36
Ga, Gallium (ppm)	18.8	16.9	20.7	17.8	19.7
Gd, Gadolinium (ppm)	5.49	5.22	5.76	5.26	5.72
Ge, Germanium (ppm)	2.10	1.84	2.36	IND	IND
Hf, Hafnium (ppm)	3.41	2.84	3.97	3.09	3.72
Ho, Holmium (ppm)	0.92	0.85	1.00	0.88	0.96
In, Indium (ppm)	0.98	0.84	1.11	IND	IND
K, Potassium (wt.%)	2.51	2.45	2.58	2.48	2.55
La, Lanthanum (ppm)	41.4	39.3	43.5	39.9	42.9
Li, Lithium (ppm)	22.6	20.1	25.2	21.5	23.8
Lu, Lutetium (ppm)	0.40	0.34	0.46	0.38	0.42
Mg, Magnesium (wt.%)	0.337	0.326	0.347	0.328	0.345
Mn, Manganese (wt.%)	0.008	0.008	0.008	0.008	0.008
Mo, Molybdenum (ppm)	5.45	4.73	6.18	IND	IND

SI unit equivalents: ppm (parts per million;  $1 \times 10^{-6}$ )  $\equiv$  mg/kg; wt.% (weight per cent)  $\equiv$  % (mass fraction).

Note: intervals may appear asymmetric due to rounding.

IND = indeterminate (due to limited reading resolution of the methods employed).

Table 2 continued.

Constituent	Certified Value	95 % Expanded Uncertainty		95 % Tolerance Limits	
		Low	High	Low	High
<b>Peroxide Fusion ICP continued</b>					
Nb, Niobium (ppm)	9.81	8.36	11.25	9.27	10.35
Nd, Neodymium (ppm)	35.0	33.3	36.6	33.3	36.6
P, Phosphorus (wt.%)	0.030	0.027	0.033	IND	IND
Pb, Lead (ppm)	66	55	76	63	69
Pr, Praseodymium (ppm)	9.58	9.22	9.95	9.23	9.94
Rb, Rubidium (ppm)	148	142	153	141	154
S, Sulphur (wt.%)	1.30	1.26	1.35	1.27	1.34
Sb, Antimony (ppm)	3.92	3.47	4.36	3.34	4.50
Sc, Scandium (ppm)	10.5	9.9	11.0	IND	IND
Si, Silicon (wt.%)	33.74	32.84	34.63	33.38	34.10
Sm, Samarium (ppm)	6.60	6.27	6.93	6.35	6.85
Sn, Tin (ppm)	15.5	13.1	17.9	IND	IND
Sr, Strontium (ppm)	44.7	42.1	47.3	42.7	46.6
Ta, Tantalum (ppm)	0.91	0.77	1.05	IND	IND
Tb, Terbium (ppm)	0.81	0.69	0.93	0.76	0.86
Th, Thorium (ppm)	13.5	13.0	14.1	13.2	13.9
Ti, Titanium (wt.%)	0.289	0.283	0.295	0.283	0.296
Tl, Thallium (ppm)	0.94	0.80	1.08	IND	IND
Tm, Thulium (ppm)	0.39	0.33	0.44	0.36	0.41
U, Uranium (ppm)	4.39	4.10	4.67	4.17	4.60
V, Vanadium (ppm)	190	183	197	187	194
W, Tungsten (ppm)	7.31	6.25	8.37	6.84	7.77
Y, Yttrium (ppm)	25.3	24.2	26.5	24.4	26.3
Yb, Ytterbium (ppm)	2.58	2.41	2.75	2.42	2.74
Zn, Zinc (ppm)	118	107	128	115	121
Zr, Zirconium (ppm)	122	112	132	118	126
<b>Infrared Combustion</b>					
C, Carbon (wt.%)	0.780	0.765	0.794	0.767	0.793
S, Sulphur (wt.%)	1.29	1.26	1.32	1.27	1.31

SI unit equivalents: ppm (parts per million;  $1 \times 10^{-6}$ )  $\equiv$  mg/kg; wt.% (weight per cent)  $\equiv$  % (mass fraction).

Note: intervals may appear asymmetric due to rounding.

IND = indeterminate (due to limited reading resolution of the methods employed. For practical purposes the 95 % Expanded Uncertainty can be set between zero and a two times multiple of the upper bound/non-detect limit value).

**Table 3. Indicative Values for OREAS 927b.**

Constituent	Unit	Value	Constituent	Unit	Value	Constituent	Unit	Value
<b>4-Acid Digestion</b>								
B	ppm	< 10	Ba	wt.%	0.122	Hg	ppm	0.077
<b>Aqua Regia Digestion</b>								
Dy	ppm	1.64	Ho	ppm	0.29	Pt	ppb	1.67
Er	ppm	0.69	Nd	ppm	22.9	Sm	ppm	4.27
Eu	ppm	0.80	Pd	ppb	3.50	Tm	ppm	0.074
Gd	ppm	3.59	Pr	ppm	6.16			
<b>Borate Fusion XRF</b>								
Ag	ppm	< 10	Ge	ppm	< 10	Se	ppm	< 10
As	ppm	72	Hg	ppm	< 100	Sm	ppm	27.8
Au	ppm	< 10	Ho	ppm	< 10	Ta	ppm	45.0
Cd	ppm	< 10	In	ppm	< 100	Tb	ppm	< 10
Ce	ppm	74	La	ppm	55	Te	ppm	< 100
Cl	ppm	11.7	Lu	ppm	< 10	Th	ppm	< 10
Cs	ppm	< 10	MnO	wt.%	0.011	Tl	ppm	< 10
Dy	ppm	< 10	Nb	ppm	48.4	Tm	ppm	< 10
Er	ppm	< 10	Nd	ppm	53	U	ppm	< 10
Eu	ppm	< 10	Pb	ppm	57	W	ppm	18.4
Ga	ppm	< 10	Pr	ppm	< 10	Y	ppm	35.0
Gd	ppm	7.50	Sc	ppm	15.0	Yb	ppm	< 10
<b>Borate / Peroxide Fusion ICP</b>								
Ag	ppm	4.66	Na	wt.%	0.076	Se	ppm	9.48
B	ppm	119	Ni	ppm	20.8	Te	ppm	< 1
Hg	ppm	< 5	Re	ppm	< 0.1			
<b>Laser Ablation ICP-MS</b>								
Ag	ppm	3.90	Hf	ppm	3.30	Sm	ppm	6.54
As	ppm	52	Ho	ppm	0.91	Sn	ppm	13.8
Ba	wt.%	0.196	In	ppm	0.85	Sr	ppm	42.7
Be	ppm	1.80	La	ppm	39.1	Ta	ppm	0.81
Bi	ppm	61	Lu	ppm	0.34	Tb	ppm	0.73
Cd	ppm	0.10	Mn	wt.%	0.007	Te	ppm	< 0.2
Ce	ppm	68	Mo	ppm	4.90	Th	ppm	12.7
Co	ppm	9.00	Nb	ppm	10.4	Ti	wt.%	0.291
Cr	ppm	80	Nd	ppm	33.7	Tl	ppm	0.15
Cs	ppm	4.54	Ni	ppm	11.0	Tm	ppm	0.39
Cu	wt.%	0.992	Pb	ppm	50	U	ppm	4.12
Dy	ppm	4.47	Pr	ppm	8.95	V	ppm	188
Er	ppm	2.49	Rb	ppm	142	W	ppm	7.75
Eu	ppm	1.15	Re	ppm	< 0.01	Y	ppm	24.5
Ga	ppm	15.2	Sb	ppm	3.85	Yb	ppm	2.65
Gd	ppm	5.10	Sc	ppm	11.0	Zn	ppm	83
Ge	ppm	1.70	Se	ppm	< 5	Zr	ppm	119

SI unit equivalents: ppm (parts per million;  $1 \times 10^{-6}$ )  $\equiv$  mg/kg; wt.% (weight per cent)  $\equiv$  % (mass fraction).

Note: the number of significant figures reported is not a reflection of the level of certainty of stated values. They are instead an artefact of ORE's in-house CRM-specific LIMS.



## TABLE OF CONTENTS

INTRODUCTION .....	10
SOURCE MATERIAL .....	10
COMMUNITION AND HOMOGENISATION PROCEDURES .....	11
PHYSICAL PROPERTIES.....	11
ANALYTICAL PROGRAM.....	12
STATISTICAL ANALYSIS .....	13
Certified Values and their uncertainty intervals .....	13
Indicative (uncertified) values .....	13
Homogeneity Evaluation.....	13
PERFORMANCE GATES .....	14
PARTICIPATING LABORATORIES.....	19
PREPARER AND SUPPLIER .....	22
METROLOGICAL TRACEABILITY .....	22
COMMUTABILITY .....	23
INTENDED USE .....	23
MINIMUM SAMPLE SIZE.....	23
PERIOD OF VALIDITY & STORAGE INSTRUCTIONS .....	24
INSTRUCTIONS FOR HANDLING & CORRECT USE .....	24
LEGAL NOTICE.....	25
DOCUMENT HISTORY.....	25
QMS CERTIFICATION.....	25
CERTIFYING OFFICER .....	26
REFERENCES .....	26

## LIST OF TABLES

Table 1. Certified Values, Uncertainty & Tolerance Intervals for multi-elements by 4-acid digestion and aqua regia digestion in OREAS 927b. ....	2
Table 2. Certified Values, Uncertainty & Tolerance Intervals for other measurands in OREAS 927b.....	5
Table 3. Indicative Values for OREAS 927b.....	8
Table 4. Physical properties of OREAS 927b.....	11
Table 5. Indicative mineralogy of OREAS 927b based on semi-quantitative XRD analysis.....	12
Table 6. Performance Gates for OREAS 927b.....	14

## LIST OF FIGURES

Figure 1. Ag by 4-acid digestion in OREAS 927b.....	20
Figure 2. Cu by 4-acid digestion in OREAS 927b.....	21

## INTRODUCTION

OREAS reference materials are intended to provide a low-cost method of evaluating and improving the quality of analysis of geological samples. To the geologist they provide a means of implementing quality control in analytical data sets generated in exploration from the grass roots level through to prospect evaluation, and in grade control at mining operations. To the analyst they provide an effective means of calibrating analytical equipment, assessing new techniques and routinely monitoring in-house procedures. OREAS reference materials enable users to successfully achieve process control of these tasks because the observed variance from repeated analysis has its origin almost exclusively in the analytical process rather than the reference material itself. In evaluating laboratory performance with this CRM, the section headed 'Instructions for correct use' should be read carefully.

Table 1 (generated from data supplied by laboratories all accredited to ISO 17025 for 4-acid and aqua regia digestions) and Table 2 (generated from data supplied by laboratories mostly accredited to ISO 17025) provide the certified values and their associated 95 % expanded uncertainty and tolerance intervals, Table 3 shows indicative values including major and trace element characterisation, Table 4 provides some indicative physical properties and Table 5 provides indicative mineralogy based on semi-quantitative XRD analysis. Table 6 presents the performance gate intervals for all certified values.

Tabulated results of all analytes together with uncorrected means, medians, standard deviations, relative standard deviations and per cent deviation of lab means from the corrected mean of means (PDM<sup>3</sup>) are presented in the detailed certification data for this CRM (**OREAS 927b-DataPack.1.0.241122\_215420.xlsx**).

Results are also presented in scatter plots for Ag and Cu by 4-acid digestion with ICP-OES/MS finish in Figures 1 and 2 respectively, together with  $\pm 3SD$  (magenta) and  $\pm 5\%$  (yellow) control lines and certified value (green line). Accepted individual results are coloured blue and individual and dataset outliers are identified in red and violet, respectively.

## SOURCE MATERIAL

OREAS 927b was prepared from material from the CSA mine located near the town of Cobar in central western New South Wales, Australia. The copper ore body is hosted by the Early Devonian CSA Siltstone, a thinly bedded turbiditic sequence of carbonaceous siltstones and mudstones with minor coarser units. The CSA Siltstone is part of the Cobar Supergroup, consisting of lower syn-rift sediments and upper post-rift sag phase sediments. The mineralisation is structurally controlled and confined to a number of steeply dipping bodies within a major shear zone on the eastern margin of the Early Devonian Cobar Basin. It is characterised by low-grade greenschist alteration and epigenetic low-grade mineralisation enveloping higher-grade shoots of vein complexes or sub-massive to massive sulphides. The sulphides include chalcopyrite, pyrrhotite, pyrite, sphalerite, galena, bornite and cubanite. Iron-rich chlorite and silica are prominent alterations in the siltstone host.

## COMMINUTION AND HOMOGENISATION PROCEDURES

The material constituting OREAS 927b was prepared in the following manner:

- Drying the ores and barren black slate to constant mass at 105 °C;
- Multi-stage milling of ores and barren black slate to achieve a particle size distribution of > 99.5 % passing 75 µm;
- Preliminary homogenisation of ore source materials;
- Representative sampling and check assaying of ore source materials;
- Blending the ores and barren black slate in appropriate proportions to achieve target grades;
- Homogenisation using OREAS' novel processing technologies;
- Packaging in 10 g units sealed in laminated foil pouches and 500 g units in plastic jars.

## PHYSICAL PROPERTIES

OREAS 927b was tested at ORE Research & Exploration Pty Ltd's onsite facility for various physical properties. Table 4 presents these findings that should be used for informational purposes only.

**Table 4. Physical properties of OREAS 927b.**

Bulk Density (kg/m <sup>3</sup> )	Moisture (wt.%)	Munsell Notation <sup>‡</sup>	Munsell Color <sup>‡</sup>
601	0.43	N5	Medium Gray

<sup>‡</sup>The Munsell Rock Color Chart helps geologists and archeologists communicate with colour more effectively by cross-referencing ISCC-NBS colour names with unique Munsell alpha-numeric colour notations for rock colour samples.

## MINERALOGY

The semi-quantitative XRD results shown in Table 5 below have been normalised to 100% and represent the relative proportion of crystalline material. Totals greater or less than 100% are due to rounding errors. A trace amount of orthopyroxene might be present. 'Clay mineral' appears to be mainly vermiculite. 'Kandite group' appears to be mainly kaolinite. A trace of pyrite, calcite and epidote may be present. Some amorphous material might be present.

**Table 5. Indicative mineralogy of OREAS 927b based on semi-quantitative XRD analysis.**

Mineral / Mineral Group	% (mass ratio)
Clay Mineral	< 1
Stilpnomelane and/or Sepiolite	< 1
Chlorite	1
Kandite group	1
Serpentine	< 1
Annite - biotite - phlogopite	9
Muscovite	27
Talc	0
Plagioclase	3
K-feldspar and/or rutile	1
Quartz	56
Calcite	0
Ankerite - dolomite	0
Pyrite	0
Chalcopyrite	1
Gypsum	0
Magnetite	0
Goethite	1

## ANALYTICAL PROGRAM

Twenty-six commercial analytical laboratories participated in the program to certify the elements reported in Table 1 and 2. The following methods were employed:

- 4-acid (HNO<sub>3</sub>-HF-HClO<sub>4</sub>-HCl) digestion with full suite ICP-OES and ICP-MS elemental packages (up to 25 laboratories depending on the element);
- Aqua regia digestion for full elemental suite ICP-OES and ICP-MS (up to 24 laboratories depending on the element).
- Lithium borate fusion whole rock analysis package by X-ray fluorescence (up to 15 laboratories depending on the element);
- Thermogravimetry: Loss on Ignition (LOI) at 1000 °C (10 laboratories used a thermogravimetric analyser, 4 laboratories used a conventional muffle furnace and 3 laboratories included LOI with their fusion package);
- Lithium borate or sodium peroxide fusion with full suite ICP-OES and ICP-MS elemental packages (up to 21 laboratories depending on the element);
- C and S by infrared combustion furnace/CS analyser (23 laboratories).

For the round robin program ten 350 g test units were taken at predetermined intervals during the bagging stage, immediately following homogenisation and are considered representative of the entire prepared batch. The six samples received by each laboratory were obtained by taking two 15 g scoop splits from each of three separate 350 g test units. This format enabled a nested ANOVA treatment of the results to evaluate homogeneity, i.e. to ascertain whether between-unit variance is greater than within-unit variance (see 'Homogeneity Evaluation' section below).

## STATISTICAL ANALYSIS

**Certified Values and their uncertainty intervals** (Tables 1 and 2) have been determined for each analyte following removal of individual, laboratory dataset (batch) and 3SD outliers (single iteration).

For individual outliers within a laboratory batch the z-score test is used in combination with a second method that determines the per cent deviation of the individual value from the batch median. Outliers in general are selected on the basis of z-scores  $> 2.5$  and with per cent deviations (i)  $> 3$  and (ii) more than three times the average absolute per cent deviation for the batch. Each laboratory data set mean is tested for outlying status based on z-score discrimination and rejected if  $> 2.5$ . After individual and laboratory data set (batch) outliers have been eliminated a non-iterative 3 standard deviation filter is applied, with those values lying outside this window also relegated to outlying status. However, while statistics are taken into account, the exercise of a statistician's prerogative plays a significant role in identifying outliers.

**95 % Expanded Uncertainty** provides a 95 % probability that the true value of the analyte under consideration lies between the upper and lower limits and is calculated according to the method outlined in ISO 98-3:2008 [5, 15]. All known or suspected sources of bias have been investigated or taken into account.

**Indicative (uncertified) values** (Table 3) are present where the number of laboratories reporting a particular analyte is insufficient ( $< 5$ ) to support certification or where interlaboratory consensus is poor. This data is intended for 'informational purposes' only.

**Standard Deviation** intervals (see Table 5, 'Performance Gates') provide an indication of a level of performance that might reasonably be expected from a laboratory being monitored by this CRM in a QA/QC program. They take into account errors attributable to measurement uncertainty and CRM variability. For an effective CRM the contribution of the latter should be negligible in comparison to measurement errors. The Standard Deviation values include all sources of measurement uncertainty: between-lab variance, within-run variance (precision errors) and CRM variability.

The SD for each analyte's certified value is calculated from the same filtered data set used to determine the certified value, i.e., after removal of all individual, lab dataset (batch) and 3SD outliers (single iteration). These outliers can only be removed after the absolute homogeneity of the CRM has been independently established, i.e., the outliers must be confidently deemed to be analytical rather than arising from inhomogeneity of the CRM. ***The standard deviation is then calculated for each analyte from the pooled accepted analyses generated from the certification program.***

### Homogeneity Evaluation

The tolerance limits (ISO 16269:2014) [6] shown in Tables 1 and 2 were determined using an analysis of precision errors method and are considered a conservative estimate of true homogeneity. The meaning of tolerance limits may be illustrated for copper by 4-acid digestion, where 99 % of the time ( $1-\alpha=0.99$ ) at least 95 % of subsamples ( $\rho=0.95$ ) will have concentrations lying between 1.13 wt. % and 1.16 wt. %. Put more precisely, this means that if the same number of subsamples were taken and analysed in the same manner repeatedly, 99 % of the tolerance intervals so constructed would cover at least 95 % of the total population, and 1% of the tolerance intervals would cover less than 95 % of the total population. ***Please note that tolerance limits pertain to the homogeneity of the CRM only and should not be used as control limits for laboratory performance.***

Based on the statistical analysis of the results of the interlaboratory certification program, it can be concluded that OREAS 927b is fit-for-purpose as a certified reference material (see 'Intended Use' below).

## PERFORMANCE GATES

Table 6 below shows intervals calculated for two and three standard deviations. As a guide these intervals may be regarded as warning or rejection for multiple 2SD outliers, or rejection for individual 3SD outliers in QC monitoring, although their precise application should be at the discretion of the QC manager concerned (also see 'Intended Use' section below). Westgard Rules extend the basics of single-rule QC monitoring using multi-rules (for more information visit [www.westgard.com/mltirule.htm](http://www.westgard.com/mltirule.htm)). A second method utilises a 5% window calculated directly from the certified value.

Standard deviation is also shown in relative percent for one, two and three relative standard deviations (1RSD, 2RSD and 3RSD) to facilitate an appreciation of the magnitude of these numbers and a comparison with the 5% window. Caution should be exercised when concentration levels approach lower limits of detection of the analytical methods employed as performance gates calculated from standard deviations tend to be excessively wide whereas those determined by the 5% method are too narrow. One approach used at commercial laboratories is to set the acceptance criteria at twice the detection level (DL)  $\pm$  10 %.

*i.e., Certified Value  $\pm$  10 %  $\pm$  2DL [1].*

**Table 6. Performance Gates for OREAS 927b.**

Constituent	Certified Value	Absolute Standard Deviations					Relative Standard Deviations			5 % window	
		1SD	2SD Low	2SD High	3SD Low	3SD High	1RSD	2RSD	3RSD	Low	High
<b>4-Acid Digestion</b>											
Ag, ppm	4.63	0.205	4.22	5.04	4.01	5.24	4.42%	8.85%	13.27%	4.40	4.86
Al, wt. %	6.09	0.138	5.81	6.36	5.68	6.50	2.26%	4.52%	6.78%	5.78	6.39
As, ppm	56	2.4	51	61	49	63	4.35%	8.70%	13.05%	53	59
Be, ppm	2.21	0.076	2.06	2.36	1.98	2.44	3.43%	6.87%	10.30%	2.10	2.32
Bi, ppm	63	2.6	58	68	55	71	4.09%	8.17%	12.26%	60	66
Ca, wt. %	0.029	0.002	0.024	0.033	0.022	0.036	8.12%	16.23%	24.35%	0.027	0.030
Cd, ppm	0.20	0.02	0.15	0.25	0.13	0.27	12.18%	24.36%	36.54%	0.19	0.21
Ce, ppm	73	4.3	64	82	60	86	5.93%	11.86%	17.79%	69	77
Co, ppm	9.70	0.529	8.64	10.75	8.11	11.28	5.45%	10.90%	16.35%	9.21	10.18
Cr, ppm	77	6.8	64	91	57	98	8.84%	17.68%	26.51%	73	81
Cs, ppm	4.59	0.239	4.12	5.07	3.88	5.31	5.21%	10.42%	15.63%	4.36	4.82
Cu, wt. %	1.15	0.024	1.10	1.19	1.07	1.22	2.07%	4.14%	6.21%	1.09	1.20

SI unit equivalents: ppm (parts per million;  $1 \times 10^{-6}$ )  $\equiv$  mg/kg; wt. % (weight per cent)  $\equiv$  % (mass fraction).

Note 1: intervals may appear asymmetric due to rounding.

Note 2: the number of decimal places quoted does not imply accuracy of the certified value to this level but are given to minimise rounding errors when calculating 2SD and 3SD windows.

Table 6 continued.

Constituent	Certified Value	Absolute Standard Deviations					Relative Standard Deviations			5 % window	
		1SD	2SD Low	2SD High	3SD Low	3SD High	1RSD	2RSD	3RSD	Low	High
<b>4-Acid Digestion continued</b>											
Dy, ppm	3.05	0.159	2.73	3.36	2.57	3.52	5.21%	10.43%	15.64%	2.89	3.20
Er, ppm	1.57	0.067	1.44	1.71	1.37	1.78	4.24%	8.47%	12.71%	1.50	1.65
Eu, ppm	1.14	0.077	0.99	1.29	0.91	1.37	6.74%	13.48%	20.22%	1.08	1.20
Fe, wt.%	4.27	0.122	4.02	4.51	3.90	4.64	2.86%	5.72%	8.59%	4.06	4.48
Ga, ppm	18.5	1.09	16.3	20.6	15.2	21.7	5.89%	11.77%	17.66%	17.6	19.4
Gd, ppm	4.58	0.116	4.35	4.81	4.23	4.93	2.54%	5.08%	7.62%	4.35	4.81
Ge, ppm	0.16	0.03	0.11	0.21	0.09	0.24	15.30%	30.60%	45.90%	0.16	0.17
Hf, ppm	2.30	0.130	2.04	2.56	1.91	2.69	5.67%	11.34%	17.02%	2.18	2.41
Ho, ppm	0.54	0.048	0.45	0.64	0.40	0.69	8.82%	17.64%	26.46%	0.52	0.57
In, ppm	0.98	0.043	0.89	1.07	0.85	1.11	4.43%	8.86%	13.29%	0.93	1.03
K, wt.%	2.48	0.054	2.37	2.59	2.32	2.64	2.19%	4.37%	6.56%	2.36	2.61
La, ppm	39.9	2.57	34.8	45.0	32.2	47.6	6.45%	12.89%	19.34%	37.9	41.9
Li, ppm	22.3	0.65	21.0	23.6	20.3	24.2	2.90%	5.80%	8.70%	21.2	23.4
Lu, ppm	0.25	0.03	0.20	0.31	0.17	0.33	10.87%	21.75%	32.62%	0.24	0.26
Mg, wt.%	0.326	0.016	0.294	0.357	0.279	0.372	4.77%	9.54%	14.31%	0.309	0.342
Mn, wt.%	0.008	0.000	0.008	0.009	0.007	0.009	3.10%	6.21%	9.31%	0.008	0.009
Mo, ppm	5.27	0.248	4.78	5.77	4.53	6.02	4.71%	9.42%	14.13%	5.01	5.54
Na, wt.%	0.079	0.011	0.057	0.100	0.046	0.111	13.78%	27.56%	41.34%	0.075	0.082
Nb, ppm	4.45	0.84	2.76	6.13	1.92	6.97	18.94%	37.88%	56.82%	4.22	4.67
Nd, ppm	33.5	1.52	30.5	36.6	29.0	38.1	4.54%	9.07%	13.61%	31.8	35.2
Ni, ppm	10.9	0.61	9.6	12.1	9.0	12.7	5.64%	11.27%	16.91%	10.3	11.4
P, wt.%	0.031	0.001	0.029	0.033	0.027	0.034	3.65%	7.30%	10.95%	0.029	0.032
Pb, ppm	61	3.4	55	68	51	72	5.60%	11.20%	16.80%	58	65
Pr, ppm	8.90	0.639	7.62	10.18	6.98	10.81	7.18%	14.36%	21.55%	8.45	9.34
Rb, ppm	145	6	132	158	126	164	4.36%	8.72%	13.07%	138	152
Re, ppm	< 0.002	IND	IND	IND	IND	IND	IND	IND	IND	IND	IND
S, wt.%	1.30	0.040	1.22	1.38	1.18	1.42	3.09%	6.18%	9.27%	1.23	1.36
Sb, ppm	3.74	0.283	3.17	4.30	2.89	4.59	7.58%	15.15%	22.73%	3.55	3.92
Sc, ppm	11.1	0.58	10.0	12.3	9.4	12.9	5.23%	10.46%	15.69%	10.6	11.7
Se, ppm	15.3	1.16	13.0	17.6	11.8	18.8	7.62%	15.23%	22.85%	14.5	16.1
Sm, ppm	6.16	0.240	5.68	6.64	5.44	6.88	3.90%	7.81%	11.71%	5.85	6.47
Sn, ppm	13.0	0.79	11.5	14.6	10.7	15.4	6.03%	12.05%	18.08%	12.4	13.7
Sr, ppm	42.1	2.11	37.9	46.3	35.7	48.4	5.01%	10.03%	15.04%	40.0	44.2
Ta, ppm	0.32	0.10	0.13	0.51	0.03	0.61	29.93%	59.86%	89.79%	0.31	0.34
Tb, ppm	0.58	0.055	0.47	0.69	0.41	0.74	9.58%	19.16%	28.74%	0.55	0.60
Te, ppm	0.10	0.02	0.07	0.13	0.05	0.15	15.11%	30.21%	45.32%	0.10	0.11
Th, ppm	12.9	0.69	11.5	14.3	10.8	14.9	5.33%	10.65%	15.98%	12.2	13.5
Ti, wt.%	0.197	0.017	0.162	0.231	0.145	0.249	8.78%	17.56%	26.34%	0.187	0.207
Tl, ppm	0.91	0.050	0.81	1.01	0.76	1.06	5.48%	10.97%	16.45%	0.86	0.95
Tm, ppm	0.20	0.03	0.14	0.26	0.11	0.29	14.60%	29.20%	43.80%	0.19	0.21
U, ppm	4.20	0.215	3.77	4.63	3.55	4.84	5.11%	10.22%	15.33%	3.99	4.41
V, ppm	183	10	163	203	154	212	5.35%	10.71%	16.06%	174	192
W, ppm	6.48	0.71	5.06	7.90	4.36	8.60	10.92%	21.85%	32.77%	6.16	6.80

SI unit equivalents: ppm (parts per million;  $1 \times 10^{-6}$ )  $\equiv$  mg/kg; wt.% (weight per cent)  $\equiv$  % (mass fraction).

Note 1: intervals may appear asymmetric due to rounding; IND = indeterminate.

Note 2: the number of decimal places quoted does not imply accuracy of the certified value to this level but are given to minimise rounding errors when calculating 2SD and 3SD windows.

Table 6 continued.

Constituent	Certified Value	Absolute Standard Deviations					Relative Standard Deviations			5 % window	
		1SD	2SD Low	2SD High	3SD Low	3SD High	1RSD	2RSD	3RSD	Low	High
<b>4-Acid Digestion continued</b>											
Y, ppm	15.2	1.11	13.0	17.5	11.9	18.6	7.31%	14.62%	21.92%	14.5	16.0
Yb, ppm	1.55	0.123	1.30	1.80	1.18	1.92	7.96%	15.93%	23.89%	1.47	1.63
Zn, ppm	112	4	104	121	99	125	3.83%	7.66%	11.49%	107	118
Zr, ppm	77	3.6	70	85	67	88	4.69%	9.38%	14.07%	74	81
<b>Aqua Regia Digestion</b>											
Ag, ppm	4.51	0.239	4.03	4.98	3.79	5.22	5.30%	10.59%	15.89%	4.28	4.73
Al, wt. %	0.674	0.066	0.543	0.805	0.477	0.870	9.73%	19.45%	29.18%	0.640	0.707
As, ppm	54	2.2	49	58	47	60	4.16%	8.33%	12.49%	51	56
Au, ppm	< 0.02	IND	IND	IND	IND	IND	IND	IND	IND	IND	IND
B, ppm	< 10	IND	IND	IND	IND	IND	IND	IND	IND	IND	IND
Ba, ppm	177	30	116	238	86	269	17.18%	34.35%	51.53%	168	186
Be, ppm	0.44	0.028	0.39	0.50	0.36	0.53	6.29%	12.58%	18.87%	0.42	0.46
Bi, ppm	63	3.6	56	70	52	74	5.74%	11.48%	17.22%	60	66
Ca, wt. %	0.024	0.005	0.014	0.033	0.010	0.038	19.85%	39.69%	59.54%	0.023	0.025
Cd, ppm	0.18	0.02	0.13	0.23	0.11	0.25	13.49%	26.97%	40.46%	0.17	0.19
Ce, ppm	53	4.0	45	60	41	64	7.54%	15.08%	22.62%	50	55
Co, ppm	9.55	0.517	8.51	10.58	8.00	11.10	5.42%	10.83%	16.25%	9.07	10.03
Cr, ppm	18.8	1.54	15.7	21.8	14.1	23.4	8.23%	16.45%	24.68%	17.8	19.7
Cs, ppm	1.25	0.17	0.90	1.60	0.73	1.77	13.88%	27.75%	41.63%	1.19	1.31
Cu, wt. %	1.14	0.013	1.11	1.16	1.10	1.18	1.18%	2.37%	3.55%	1.08	1.19
Fe, wt. %	4.05	0.136	3.78	4.32	3.64	4.46	3.36%	6.73%	10.09%	3.85	4.25
Ga, ppm	2.43	0.43	1.56	3.30	1.13	3.74	17.87%	35.74%	53.61%	2.31	2.55
Ge, ppm	0.13	0.02	0.08	0.17	0.06	0.19	16.92%	33.83%	50.75%	0.12	0.13
Hf, ppm	0.29	0.04	0.22	0.36	0.19	0.40	12.25%	24.50%	36.75%	0.28	0.31
Hg, ppm	0.042	0.007	0.027	0.056	0.020	0.063	17.40%	34.79%	52.19%	0.039	0.044
In, ppm	0.93	0.043	0.85	1.02	0.81	1.06	4.57%	9.13%	13.70%	0.89	0.98
K, wt. %	0.267	0.026	0.214	0.319	0.187	0.346	9.91%	19.82%	29.73%	0.253	0.280
La, ppm	25.2	2.46	20.2	30.1	17.8	32.6	9.79%	19.58%	29.36%	23.9	26.4
Li, ppm	2.36	0.40	1.56	3.16	1.16	3.56	16.94%	33.88%	50.81%	2.24	2.48
Lu, ppm	0.083	0.016	0.051	0.114	0.035	0.130	19.16%	38.31%	57.47%	0.078	0.087
Mg, wt. %	0.060	0.010	0.041	0.079	0.031	0.089	16.07%	32.15%	48.22%	0.057	0.063
Mn, wt. %	0.006	0.000	0.005	0.007	0.005	0.007	6.11%	12.21%	18.32%	0.006	0.006
Mo, ppm	4.97	0.361	4.25	5.69	3.89	6.06	7.27%	14.53%	21.80%	4.72	5.22
Na, wt. %	0.010	0.002	0.006	0.015	0.004	0.017	21.21%	42.43%	63.64%	0.010	0.011
Nb, ppm	< 0.05	IND	IND	IND	IND	IND	IND	IND	IND	IND	IND
Ni, ppm	8.31	0.440	7.43	9.19	6.99	9.63	5.30%	10.60%	15.90%	7.89	8.72
P, wt. %	0.026	0.003	0.020	0.031	0.018	0.034	10.59%	21.19%	31.78%	0.025	0.027
Pb, ppm	46.9	3.79	39.4	54.5	35.6	58.3	8.07%	16.14%	24.21%	44.6	49.3
Rb, ppm	16.0	1.6	12.8	19.3	11.2	20.9	10.14%	20.27%	30.41%	15.2	16.8
Re, ppm	< 0.001	IND	IND	IND	IND	IND	IND	IND	IND	IND	IND
S, wt. %	1.30	0.049	1.20	1.40	1.15	1.44	3.78%	7.55%	11.33%	1.23	1.36
Sb, ppm	2.34	0.47	1.40	3.29	0.92	3.76	20.17%	40.35%	60.52%	2.23	2.46
Sc, ppm	1.89	0.147	1.59	2.18	1.45	2.33	7.80%	15.60%	23.41%	1.79	1.98

SI unit equivalents: ppm (parts per million;  $1 \times 10^{-6}$ )  $\equiv$  mg/kg; wt. % (weight per cent)  $\equiv$  % (mass fraction).

Note 1: intervals may appear asymmetric due to rounding; IND = indeterminate.

Note 2: the number of decimal places quoted does not imply accuracy of the certified value to this level but are given to minimise rounding errors when calculating 2SD and 3SD windows.



Table 6 continued.

Constituent	Certified Value	Absolute Standard Deviations					Relative Standard Deviations			5 % window	
		1SD	2SD Low	2SD High	3SD Low	3SD High	1RSD	2RSD	3RSD	Low	High
<b>Aqua Regia Digestion continued</b>											
Se, ppm	14.4	1.01	12.4	16.4	11.4	17.5	6.99%	13.99%	20.98%	13.7	15.1
Sn, ppm	10.1	0.60	8.9	11.3	8.3	11.9	5.89%	11.78%	17.67%	9.6	10.6
Sr, ppm	8.75	2.06	4.62	12.87	2.55	14.94	23.60%	47.21%	70.81%	8.31	9.18
Ta, ppm	< 0.01	IND	IND	IND	IND	IND	IND	IND	IND	IND	IND
Tb, ppm	0.37	0.030	0.31	0.43	0.28	0.46	8.00%	15.99%	23.99%	0.36	0.39
Te, ppm	0.080	0.010	0.059	0.101	0.049	0.112	13.03%	26.05%	39.08%	0.076	0.084
Th, ppm	8.61	0.364	7.88	9.34	7.52	9.70	4.23%	8.47%	12.70%	8.18	9.04
Ti, wt. %	0.005	0.001	0.002	0.007	0.001	0.009	28.36%	56.71%	85.07%	0.005	0.005
Tl, ppm	0.13	0.02	0.09	0.18	0.07	0.20	16.38%	32.76%	49.14%	0.13	0.14
U, ppm	2.21	0.163	1.89	2.54	1.73	2.70	7.35%	14.69%	22.04%	2.10	2.32
V, ppm	21.1	1.83	17.4	24.7	15.6	26.6	8.68%	17.36%	26.05%	20.0	22.1
W, ppm	3.61	0.62	2.37	4.86	1.75	5.48	17.20%	34.40%	51.59%	3.43	3.79
Y, ppm	6.24	0.541	5.16	7.33	4.62	7.87	8.66%	17.32%	25.97%	5.93	6.56
Yb, ppm	0.61	0.036	0.54	0.68	0.50	0.72	5.82%	11.65%	17.47%	0.58	0.64
Zn, ppm	103	3	97	108	94	111	2.79%	5.58%	8.36%	97	108
Zr, ppm	10.2	0.96	8.3	12.1	7.3	13.1	9.44%	18.89%	28.33%	9.7	10.7
<b>Borate Fusion XRF</b>											
Al <sub>2</sub> O <sub>3</sub> , wt. %	11.71	0.150	11.41	12.01	11.26	12.16	1.28%	2.56%	3.84%	11.13	12.30
BaO, wt. %	0.225	0.010	0.204	0.246	0.193	0.256	4.68%	9.35%	14.03%	0.213	0.236
Bi, ppm	< 100	IND	IND	IND	IND	IND	IND	IND	IND	IND	IND
CaO, wt. %	0.035	0.007	0.022	0.048	0.015	0.055	19.19%	38.38%	57.58%	0.033	0.037
Co, ppm	< 100	IND	IND	IND	IND	IND	IND	IND	IND	IND	IND
Cr <sub>2</sub> O <sub>3</sub> , ppm	131	26	79	183	53	209	19.78%	39.57%	59.35%	125	138
Cu, wt. %	1.14	0.014	1.11	1.16	1.10	1.18	1.21%	2.42%	3.63%	1.08	1.19
Fe <sub>2</sub> O <sub>3</sub> , wt. %	6.20	0.090	6.02	6.38	5.93	6.47	1.46%	2.92%	4.38%	5.89	6.51
Hf, ppm	< 80	IND	IND	IND	IND	IND	IND	IND	IND	IND	IND
K <sub>2</sub> O, wt. %	3.05	0.042	2.96	3.13	2.92	3.18	1.39%	2.78%	4.17%	2.90	3.20
MgO, wt. %	0.561	0.040	0.482	0.641	0.442	0.680	7.06%	14.12%	21.18%	0.533	0.589
Mo, ppm	< 50	IND	IND	IND	IND	IND	IND	IND	IND	IND	IND
Na <sub>2</sub> O, wt. %	0.113	0.032	0.048	0.177	0.016	0.210	28.63%	57.26%	85.88%	0.107	0.118
Ni, ppm	< 50	IND	IND	IND	IND	IND	IND	IND	IND	IND	IND
P <sub>2</sub> O <sub>5</sub> , wt. %	0.067	0.007	0.052	0.082	0.045	0.089	11.02%	22.05%	33.07%	0.064	0.071
Rb, ppm	108	34	39	176	4	211	31.99%	63.98%	95.98%	102	113
Sb, ppm	< 50	IND	IND	IND	IND	IND	IND	IND	IND	IND	IND
SiO <sub>2</sub> , wt. %	71.87	0.753	70.37	73.38	69.61	74.13	1.05%	2.10%	3.14%	68.28	75.47
Sn, ppm	< 50	IND	IND	IND	IND	IND	IND	IND	IND	IND	IND
SO <sub>3</sub> , wt. %	3.21	0.316	2.57	3.84	2.26	4.15	9.87%	19.73%	29.60%	3.05	3.37
SrO, ppm	< 120	IND	IND	IND	IND	IND	IND	IND	IND	IND	IND
TiO <sub>2</sub> , wt. %	0.493	0.017	0.460	0.526	0.443	0.542	3.36%	6.72%	10.09%	0.468	0.517
V, ppm	175	36	103	247	67	283	20.49%	40.99%	61.48%	166	184
Zn, ppm	114	19	77	151	58	170	16.37%	32.75%	49.12%	108	120
Zr, ppm	103	15	73	134	58	149	14.62%	29.24%	43.87%	98	109

SI unit equivalents: ppm (parts per million;  $1 \times 10^{-6} \equiv \text{mg/kg}$ ; wt. % (weight per cent)  $\equiv$  % (mass fraction).

Note 1: intervals may appear asymmetric due to rounding; IND = indeterminate.

Note 2: the number of decimal places quoted does not imply accuracy of the certified value to this level but are given to minimise rounding errors when calculating 2SD and 3SD windows.

Table 6 continued.

Constituent	Certified Value	Absolute Standard Deviations					Relative Standard Deviations			5 % window	
		1SD	2SD Low	2SD High	3SD Low	3SD High	1RSD	2RSD	3RSD	Low	High
<b>Thermogravimetry</b>											
LOI <sup>1000</sup> , wt.%	3.89	0.230	3.43	4.35	3.20	4.58	5.90%	11.81%	17.71%	3.69	4.08
<b>Borate / Peroxide Fusion ICP</b>											
Al, wt.%	6.14	0.105	5.93	6.35	5.82	6.45	1.70%	3.41%	5.11%	5.83	6.44
As, ppm	59	5.2	48	69	43	74	8.92%	17.84%	26.76%	56	62
Ba, wt.%	0.196	0.005	0.186	0.207	0.181	0.212	2.62%	5.23%	7.85%	0.186	0.206
Be, ppm	2.43	0.51	1.42	3.45	0.91	3.95	20.84%	41.67%	62.51%	2.31	2.56
Bi, ppm	64	2.8	58	69	55	72	4.44%	8.88%	13.31%	61	67
Ca, wt.%	0.046	0.015	0.015	0.076	0.000	0.092	33.22%	66.45%	99.67%	0.044	0.048
Cd, ppm	< 10	IND	IND	IND	IND	IND	IND	IND	IND	IND	IND
Ce, ppm	77	3.7	70	85	66	88	4.75%	9.51%	14.26%	73	81
Co, ppm	9.95	0.436	9.07	10.82	8.64	11.25	4.38%	8.76%	13.14%	9.45	10.44
Cr <sub>2</sub> O <sub>3</sub> , ppm	127	9	110	145	101	154	6.88%	13.76%	20.64%	121	134
Cs, ppm	4.84	0.294	4.26	5.43	3.96	5.73	6.07%	12.14%	18.21%	4.60	5.09
Cu, wt.%	1.14	0.029	1.08	1.20	1.05	1.23	2.57%	5.15%	7.72%	1.08	1.20
Dy, ppm	4.55	0.211	4.13	4.98	3.92	5.19	4.64%	9.28%	13.91%	4.33	4.78
Er, ppm	2.66	0.154	2.35	2.97	2.20	3.12	5.80%	11.60%	17.41%	2.53	2.79
Eu, ppm	1.23	0.051	1.13	1.33	1.08	1.39	4.10%	8.21%	12.31%	1.17	1.30
Fe, wt.%	4.31	0.087	4.13	4.48	4.04	4.57	2.02%	4.05%	6.07%	4.09	4.52
Ga, ppm	18.8	1.25	16.3	21.3	15.0	22.5	6.63%	13.26%	19.90%	17.8	19.7
Gd, ppm	5.49	0.120	5.25	5.73	5.13	5.85	2.18%	4.36%	6.54%	5.22	5.77
Ge, ppm	2.10	0.23	1.64	2.55	1.41	2.78	10.90%	21.80%	32.69%	1.99	2.20
Hf, ppm	3.41	0.47	2.48	4.34	2.01	4.80	13.67%	27.35%	41.02%	3.24	3.58
Ho, ppm	0.92	0.040	0.84	1.00	0.80	1.04	4.33%	8.66%	12.99%	0.88	0.97
In, ppm	0.98	0.10	0.78	1.17	0.68	1.27	10.18%	20.35%	30.53%	0.93	1.02
K, wt.%	2.51	0.076	2.36	2.67	2.29	2.74	3.01%	6.03%	9.04%	2.39	2.64
La, ppm	41.4	2.11	37.2	45.6	35.1	47.7	5.10%	10.19%	15.29%	39.3	43.5
Li, ppm	22.6	1.76	19.1	26.2	17.4	27.9	7.77%	15.54%	23.31%	21.5	23.8
Lu, ppm	0.40	0.034	0.33	0.47	0.30	0.50	8.54%	17.07%	25.61%	0.38	0.42
Mg, wt.%	0.337	0.010	0.317	0.356	0.307	0.366	2.92%	5.85%	8.77%	0.320	0.354
Mn, wt.%	0.008	0.000	0.007	0.008	0.007	0.008	2.17%	4.34%	6.51%	0.007	0.008
Mo, ppm	5.45	0.59	4.28	6.63	3.69	7.22	10.78%	21.56%	32.35%	5.18	5.72
Nb, ppm	9.81	1.09	7.63	11.98	6.55	13.07	11.09%	22.18%	33.26%	9.32	10.30
Nd, ppm	35.0	1.14	32.7	37.2	31.5	38.4	3.26%	6.52%	9.78%	33.2	36.7
P, wt.%	0.030	0.001	0.028	0.032	0.026	0.034	4.04%	8.08%	12.12%	0.029	0.032
Pb, ppm	66	8	49	83	40	91	12.88%	25.77%	38.65%	63	69
Pr, ppm	9.58	0.332	8.92	10.25	8.59	10.58	3.47%	6.94%	10.40%	9.11	10.06
Rb, ppm	148	5	138	157	134	161	3.12%	6.24%	9.35%	140	155
S, wt.%	1.30	0.043	1.22	1.39	1.17	1.43	3.31%	6.61%	9.92%	1.24	1.37
Sb, ppm	3.92	0.46	2.99	4.85	2.52	5.31	11.86%	23.71%	35.57%	3.72	4.11
Sc, ppm	10.5	0.53	9.4	11.5	8.9	12.0	5.03%	10.06%	15.09%	9.9	11.0
Si, wt.%	33.74	1.102	31.53	35.94	30.43	37.04	3.27%	6.53%	9.80%	32.05	35.42
Sm, ppm	6.60	0.260	6.08	7.12	5.82	7.38	3.94%	7.88%	11.82%	6.27	6.93
Sn, ppm	15.5	1.9	11.7	19.3	9.9	21.1	12.12%	24.23%	36.35%	14.7	16.3

SI unit equivalents: ppm (parts per million;  $1 \times 10^{-6}$ )  $\equiv$  mg/kg; wt.% (weight per cent)  $\equiv$  % (mass fraction).

Note 1: intervals may appear asymmetric due to rounding; IND = indeterminate.

Note 2: the number of decimal places quoted does not imply accuracy of the certified value to this level but are given to minimise rounding errors when calculating 2SD and 3SD windows.

**Table 6 continued.**

Constituent	Certified Value	Absolute Standard Deviations					Relative Standard Deviations			5 % window	
		1SD	2SD Low	2SD High	3SD Low	3SD High	1RSD	2RSD	3RSD	Low	High
<b>Borate / Peroxide Fusion ICP continued</b>											
Sr, ppm	44.7	1.93	40.8	48.5	38.9	50.5	4.32%	8.64%	12.96%	42.5	46.9
Ta, ppm	0.91	0.14	0.62	1.20	0.48	1.35	15.93%	31.87%	47.80%	0.86	0.96
Tb, ppm	0.81	0.062	0.69	0.94	0.63	1.00	7.57%	15.13%	22.70%	0.77	0.85
Th, ppm	13.5	0.44	12.7	14.4	12.2	14.9	3.22%	6.44%	9.66%	12.9	14.2
Ti, wt. %	0.289	0.007	0.275	0.303	0.268	0.310	2.38%	4.77%	7.15%	0.275	0.304
Tl, ppm	0.94	0.061	0.82	1.06	0.75	1.12	6.55%	13.10%	19.65%	0.89	0.99
Tm, ppm	0.39	0.04	0.30	0.47	0.26	0.51	10.96%	21.92%	32.87%	0.37	0.41
U, ppm	4.39	0.207	3.97	4.80	3.77	5.01	4.71%	9.43%	14.14%	4.17	4.61
V, ppm	190	9	173	208	164	216	4.53%	9.07%	13.60%	181	200
W, ppm	7.31	0.81	5.68	8.94	4.86	9.75	11.15%	22.30%	33.45%	6.94	7.67
Y, ppm	25.3	1.24	22.9	27.8	21.6	29.0	4.88%	9.76%	14.64%	24.1	26.6
Yb, ppm	2.58	0.082	2.42	2.75	2.34	2.83	3.17%	6.34%	9.51%	2.45	2.71
Zn, ppm	118	14	90	145	77	159	11.61%	23.22%	34.84%	112	124
Zr, ppm	122	8	105	139	97	147	6.86%	13.71%	20.57%	116	128
<b>Infrared Combustion</b>											
C, wt. %	0.780	0.023	0.733	0.826	0.709	0.850	3.01%	6.01%	9.02%	0.741	0.819
S, wt. %	1.29	0.042	1.21	1.37	1.17	1.42	3.22%	6.45%	9.67%	1.23	1.35

SI unit equivalents: ppm (parts per million;  $1 \times 10^{-6}$ )  $\equiv$  mg/kg; wt. % (weight per cent)  $\equiv$  % (mass fraction).

Note 1: intervals may appear asymmetric due to rounding.

Note 2: the number of decimal places quoted does not imply accuracy of the certified value to this level but are given to minimise rounding errors when calculating 2SD and 3SD windows.

## PARTICIPATING LABORATORIES

1. Actlabs, Ancaster, Ontario, Canada
2. ALS, Brisbane, QLD, Australia
3. ALS, Lima, Peru
4. ALS, Loughrea, Galway, Ireland
5. ALS, Malaga, WA, Australia
6. ALS, Vancouver, BC, Canada
7. American Assay Laboratories, Sparks, Nevada, USA
8. ARGETEST Mineral Processing, Ankara, Central Anatolia, Turkey
9. Bureau Veritas Commodities Canada Ltd, Vancouver, BC, Canada
10. Bureau Veritas Geoanalytical, Perth, WA, Australia
11. Bureau Veritas Minerals, Ankara, Central Anatolia, Turkey
12. CERTIMIN, Lima, Peru
13. Inspectorate (BV), Lima, Peru
14. Intertek, Cupang, Muntinlupa, Philippines
15. Intertek, Perth, WA, Australia
16. Intertek, Townsville, QLD, Australia
17. Intertek Genalysis, Adelaide, SA, Australia
18. MSALABS, Vancouver, BC, Canada
19. Paragon Geochemical Laboratories, Sparks, Nevada, USA
20. PT Geoservices Ltd, Cikarang, Jakarta Raya, Indonesia
21. PT Intertek Utama Services, Jakarta Timur, DKI Jakarta, Indonesia
22. SGS, Ankara, Anatolia, Turkey
23. SGS Canada Inc., Vancouver, BC, Canada
24. Shiva Analyticals Ltd, Bangalore North, Karnataka, India
25. Skyline Assayers & Laboratories, Tucson, Arizona, USA
26. Stewart Assay & Environmental Laboratories LLC, Kara-Balta, Chüy, Kyrgyzstan

**Please note: To preserve anonymity, the above numbered alphabetical list of participating laboratories does not correspond with the Lab ID numbering on the scatter plots below.**

Figure 1. Ag by 4-Acid Digestion in OREAS 927b

SPC.1879.RR1.OREAS 927b.1.4-Acid.Ag.Lab.241030.144401.SN

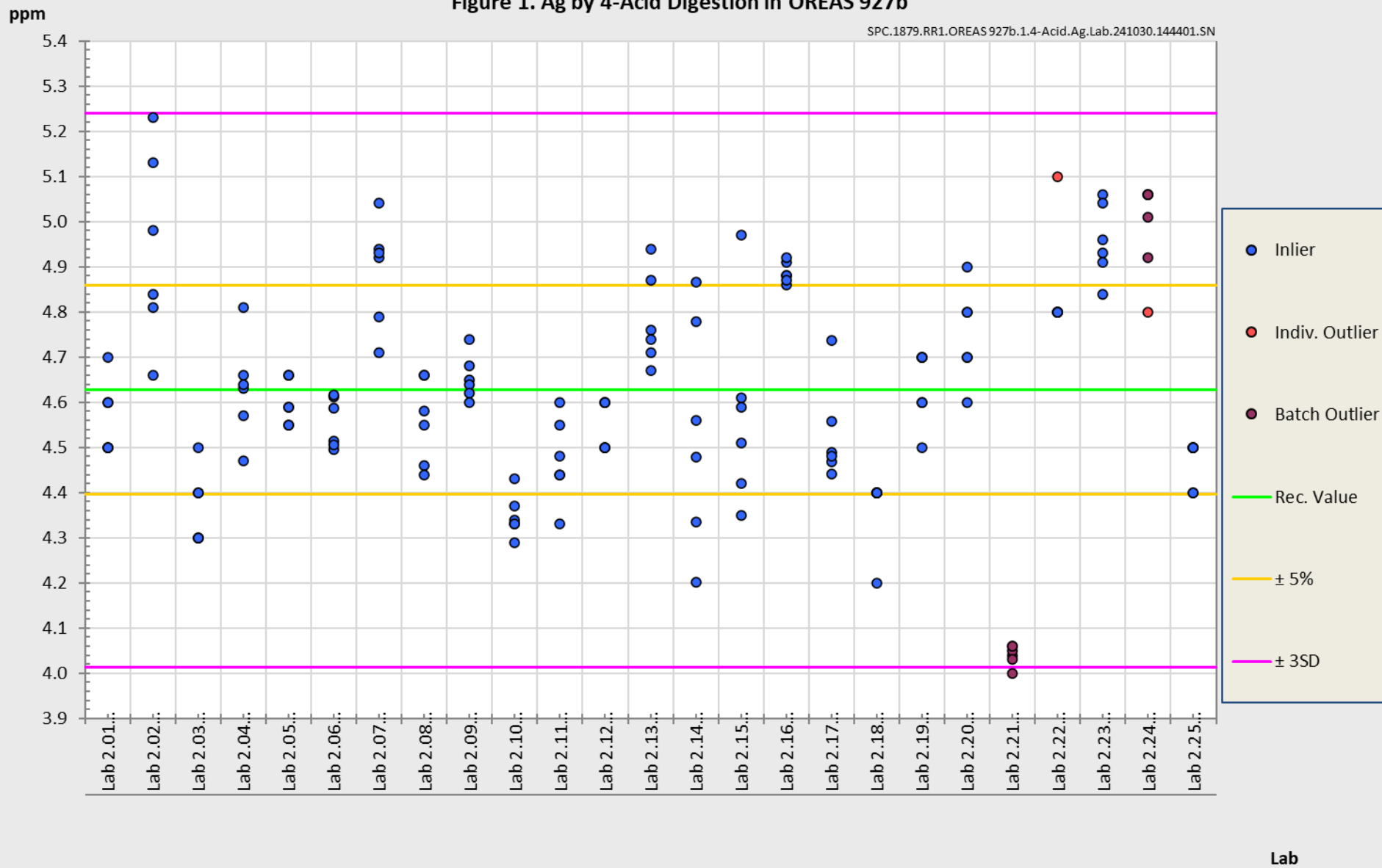
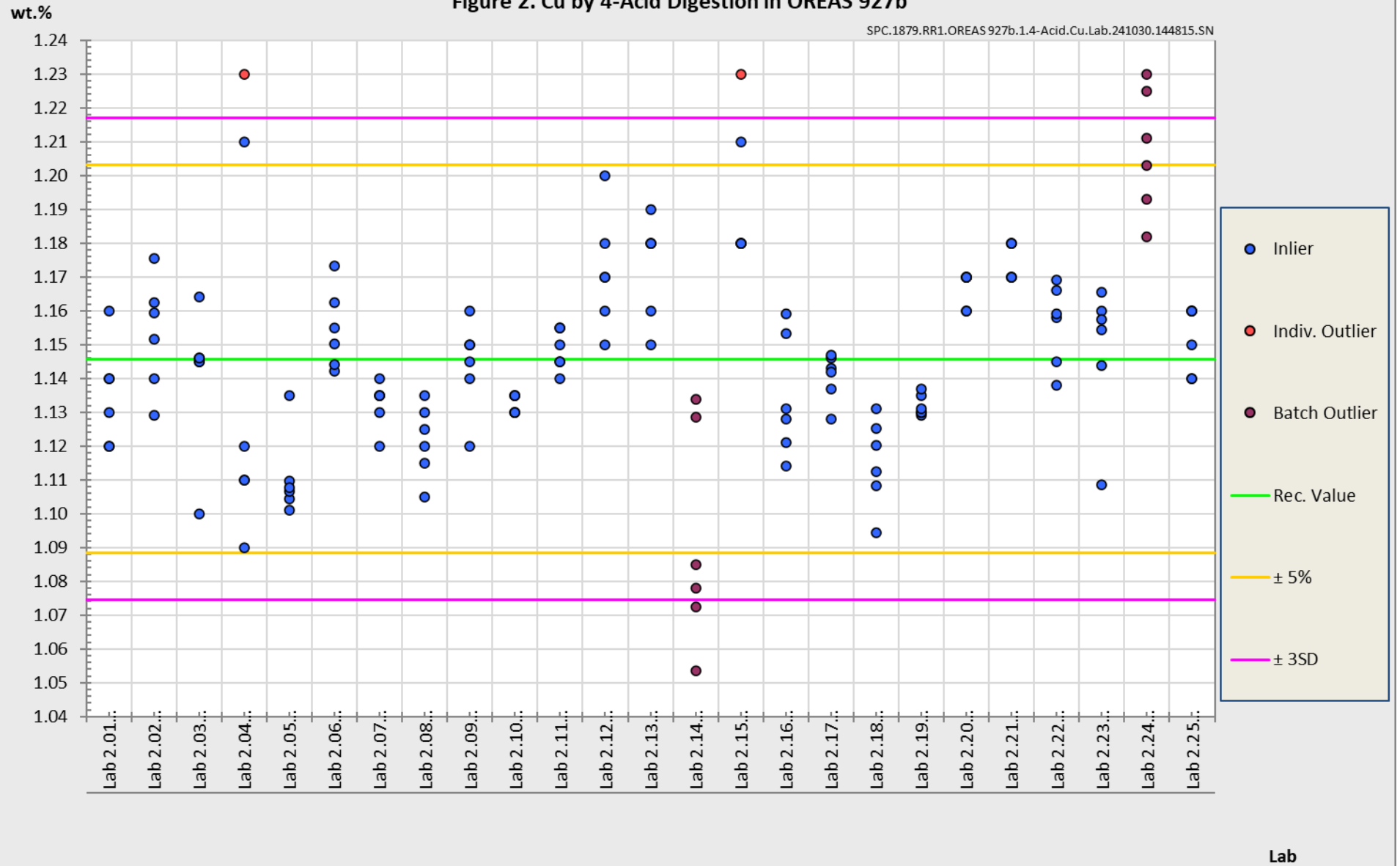


Figure 2. Cu by 4-Acid Digestion in OREAS 927b

SPC.1879.RR1.OREAS 927b.1.4-Acid.Cu.Lab.241030.144815.SN



## PREPARER AND SUPPLIER

Certified reference material OREAS 927b is prepared, certified and supplied by:



ORE Research & Exploration Pty Ltd  
37A Hosie Street  
Bayswater North VIC 3153  
AUSTRALIA

Tel: +613-9729 0333  
Fax: +613-9729 8338  
Web: [www.oreas.com](http://www.oreas.com)  
Email: [info@ore.com.au](mailto:info@ore.com.au)

## METROLOGICAL TRACEABILITY

The interlaboratory results that underpin the certified values are metrologically traceable to the international measurement scale (SI) of mass (either as a % mass fraction or as milligrams per kilogram (mg/kg)) [14]. In line with popular use, all data within tables in this certificate are expressed as the mass fraction in either weight percent (wt. %) or parts per million (ppm).

The analytical samples sent to participating laboratories were selected in a manner to be representative of the entire prepared batch of CRM. This representativeness was maintained in each submitted laboratory sample batch and ensures the user that the data is traceable from sample selection through to the analytical results. The systematic sampling method was chosen due to the low risk of overlooking repetitive effects or trends in the batch due to the way the CRM was processed. In line with ISO 17025 [8], each analytical data set received from the participating laboratories has been validated by its assayer through the inclusion of internal reference materials and QC checks during and post analysis.

The participating laboratories were chosen on the basis of their competence (from past performance in interlaboratory programs undertaken by ORE Pty Ltd) for a particular analytical method, analyte or analyte suite and sample matrix. These laboratories are accredited to ISO 17025 for 4-acid digestion (Table 1). The other operationally defined measurands characterised in this certificate (Table 2) are derived from data procured mostly from ISO 17025 accredited laboratories. The certified values presented in this report are calculated from the means of accepted data following robust technical and statistical analysis as detailed in this report.

Guide ISO/TR 16476:2016 [7], section 5.3.1 describes metrological traceability in reference materials as it pertains to the transformation of the measurand. In this section it states, *“Although the determination of the property value itself can be made traceable to appropriate units through, for example, calibration of the measurement equipment used, steps like the transformation of the sample from one physical (chemical) state to another cannot. Such transformations may only be compared with a reference (when available), or among themselves. For some transformations, reference methods have been defined and may be used in certification projects to evaluate the uncertainty associated with such a transformation. In other cases, only a comparison among different laboratories using the same procedure is possible. In this case, it is impossible to demonstrate absence of method bias; therefore, the result is an operationally defined measurand (ISO Guide 33405:2024-05, 9.2.4c) [4].”* Certification takes place on the basis of agreement among operationally defined, independent measurement results.

## COMMUTABILITY

The measurements of the results that underlie the certified values contained in this report were undertaken by methods involving pre-treatment (fusion/digestion) of the sample. This served to reduce the sample to a simple and well understood form permitting calibration using simple solutions of the CRM. Due to these methods being well understood and highly effective, commutability is not an issue for this CRM. All OREAS CRMs are sourced from natural ore minerals meaning they will display similar behaviour as routine 'field' samples in the relevant measurement process. Care should be taken to ensure 'matrix matching' as close as practically achievable. The matrix and mineralisation style of the CRM is described in the 'Source Material' section and users should select appropriate CRMs matching these attributes to the field samples being analysed.

## INTENDED USE

OREAS 927b is intended to cover all activities needed to produce a measurement result. This includes extraction, possible separation steps and the actual measurement process (the signal producing step). OREAS 927b may be used to calibrate the entire procedure by producing a pure substance CRM transformed into a calibration solution.

OREAS 927b is intended for the following uses:

- For the monitoring of laboratory performance in the analysis of analytes reported in Tables 1 and 2 in geological samples;
- For the verification of analytical methods for analytes reported in Tables 1 and 2;
- For the calibration of instruments used in the determination of the concentration of analytes reported in Tables 1 and 2. When a value provided in this certificate is used to calibrate a measurement process, the uncertainty associated with that value should be appropriately propagated into the user's uncertainty calculation. Users can determine an approximation of the standard uncertainty by calculating one fourth of the width of the Expanded Uncertainty interval given in this certificate (Expanded Uncertainty intervals are provided in Tables 1 and 2).

## MINIMUM SAMPLE SIZE

To relate analytical determinations to the values in this certificate, the minimum mass of sample used should match the typical mass that the laboratories used in the interlaboratory (round robin) certification program. This means that different minimum sample masses should be used depending on the operationally defined methodology as follows:

- 4-acid digestion with ICP-OES and/or MS finish:  $\geq 0.25$  g;
- Aqua regia digestion with ICP-OES and/or MS finish:  $\geq 0.5$  g;
- Lithium borate fusion with X-ray fluorescence finish:  $\geq 0.2$  g;
- Loss on Ignition (LOI) at 1000 °C:  $\geq 1$  g;
- Sodium peroxide fusion with ICP-OES and/or MS finish:  $\geq 0.2$  g;
- C and S by infrared combustion furnace/CS analyser:  $\geq 0.1$  g.

## PERIOD OF VALIDITY & STORAGE INSTRUCTIONS

The certification of OREAS 927b remains valid, within the specified measurement uncertainties, until at least June 2039, provided the CRM is handled and stored in accordance with the instructions given below. This certification is nullified if the CRM is any way changed or contaminated.

Store in a clean and cool dry place away from direct sunlight.

Long-term stability will be monitored at appropriate intervals and purchasers notified if any changes are observed. The period of validity may well be indefinite and will be reassessed prior to expiry with the aim of extending the validity if possible.

### Single-use sachets

Following analysis of the CRM subsample it is the manufacturers' expectation that any remaining material is discarded. The stability of the material after opening the sachet is not within the scope of proper use. However, if opened sachets are resealed after opening, then under ordinary\* storage conditions the CRM will have a shelf-life beyond ten years.

*\*ordinary storage conditions: means storage not in direct sunlight in a dry, clean, well-ventilated area at temperatures between -5 °C and 50 °C.*

## INSTRUCTIONS FOR HANDLING & CORRECT USE

Pre-homogenisation of the CRM prior to subsampling and analysis is not necessary as there is no particle segregation under transport [12].

Fine powders pose a risk to eyes and lungs and therefore standard precautions including the use of safety glasses and dust masks are advised.

### QC monitoring using multiples of the Standard Deviation (SD)

In the application of SD's in monitoring performance it is important to note that not all laboratories function at the same level of proficiency and that different methods in use at a particular laboratory have differing levels of precision. Each laboratory has its own inherent SD (for a specific concentration level and analyte-method pair) based on the analytical process and this SD is not directly related to the round robin program.

The majority of data generated in the round robin program was produced by a selection of world class laboratories. The SD's thus generated are more constrained than those that would be produced across a randomly selected group of laboratories. To produce more generally achievable SD's the 'pooled' SD's provided in this report include interlaboratory bias. This 'one size fits all' approach may require revision at the discretion of the QC manager concerned following careful scrutiny of QC control charts.

The performance gates shown in Table 6 are intended only to be used as a preliminary guide as to what a laboratory may be able to achieve. Over a period of time monitoring your own laboratory's data for this CRM, SD's should be calculated directly from your own laboratory's process. This will enable you to establish more specific performance gates that are fit for purpose for your application as well as the ability to monitor bias. If your long-term trend analysis shows an average value that is within the 95 % expanded uncertainty then generally there is no cause for concern in regard to bias.



## For use with the aqua regia digestion method

It is important to note that in the analytical industry there is no standardisation of the aqua regia digestion process. This method is a partial empirical digest and differences in recoveries for various analytes are commonplace. These are caused by variations in the digest conditions and can include the ratio of nitric to hydrochloric acids, acid strength, temperatures, leach times and secondary digestions. Recoveries for sulphide-hosted base metal sulphides approach total values, however, other analytes, in particular the lithophile elements, show greater sensitivity to method parameters. This can result in lack of consensus in an inter-laboratory certification program for these elements.

The approach applied here is to report certified values in those instances where reasonable agreement exists amongst a majority of participating laboratories. The results of specific laboratories may differ significantly from the certified values, but will, nonetheless, be valid and reproducible in the context of the specifics of the aqua regia method in use. Users of this reference material should, therefore, be mindful of this limitation when applying the certified values in a quality control program.

## LEGAL NOTICE

Ore Research & Exploration Pty Ltd has prepared and statistically evaluated the property values of this reference material to the best of its ability. The Purchaser by receipt hereof releases and indemnifies Ore Research & Exploration Pty Ltd from and against all liability and costs arising from the use of this material and information.

© COPYRIGHT Ore Research & Exploration Pty Ltd.  
Unauthorised copying, reproduction, storage or dissemination is prohibited.

## DOCUMENT HISTORY

Revision No.	Date	Changes applied
0	18 <sup>th</sup> December, 2024	First publication.

## QMS CERTIFICATION

ORE Pty Ltd is accredited for compliance with ISO 17034:2016.



ORE Pty Ltd is ISO 9001:2015 certified by Lloyd's Register Quality Assurance Ltd for its quality management system including development, manufacturing, certification and supply of CRMs.



## CERTIFYING OFFICER

Craig Hamlyn (B.Sc. Hons - Geology), Technical Manager - ORE P/L

## REFERENCES

- [1] Govett, G.J.S. (1983). Handbook of Exploration Geochemistry, Volume 2: Statistics and Data Analysis in Geochemical Prospecting (Variations of accuracy and precision).
- [2] ISO Guide 30:2015. Terms and definitions used in connection with reference materials.
- [3] ISO Guide 33401:2024-01. Reference materials – Contents of certificates, labels and accompanying documentation.
- [4] ISO Guide 33405:2024-05. Reference materials – Approaches for characterization and assessment of homogeneity and stability.
- [5] ISO Guide 98-3:2008. Guide to the expression of uncertainty in measurement (GUM:1995).
- [6] ISO 16269:2014. Statistical interpretation of data – Part 6: Determination of statistical tolerance intervals.
- [7] ISO/TR 16476:2016, Reference Materials – Establishing and expressing metrological traceability of quantity values assigned to reference materials.
- [8] ISO 17025:2017, General requirements for the competence of testing and calibration laboratories.
- [9] ISO 17034:2016. General requirements for the competence of reference material producers.
- [10] Munsell Rock Color Book (2014). Rock-Color Chart Committee, Geological Society of America (GSA), Minnesota (USA).
- [11] OREAS-BUP-70-09-11: Statistical Analysis - OREAS Evaluation Method.
- [12] OREAS-TN-04-1498: Stability under transport; an experimental study of OREAS CRMs.
- [13] OREAS-TN-05-1674: Long-term storage stability; an experimental study of OREAS CRMs.
- [14] Thompson, A.; Taylor, B.N. (2008); Guide for the Use of the International System of Units (SI); NIST Special Publication 811; U.S. Government Printing Office: Washington, DC; available at: <https://physics.nist.gov/cuu/pdf/sp811.pdf> (accessed Nov 2021).
- [15] Van der Veen A.M.H. et al. (2001). Uncertainty calculations in the certification of reference materials, Accred Qual Assur 6: 290-294.